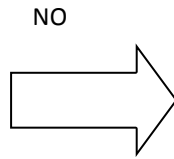
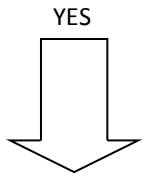


NEW MEMBERS PROTOCOL

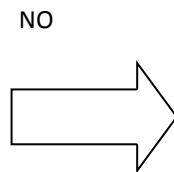
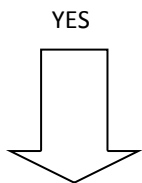


Can you make your own way to the shed?



We are sorry but we do not offer transport to and from the shed.

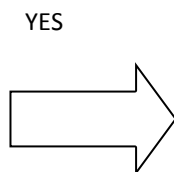
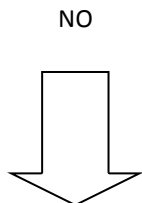
We ask everyone to visit the shed for an informal chat and tour of the shed before offering someone a place. Are you able to come down and visit the shed for the first time for an informal introduction?



If you need support to come down to the shed you need to make these arrangements yourself.

Please come and visit the shed to find out what we do and to see if you would be interested in being a member of the shed. You can bring someone with you if you like. When we have met you we will be able to advise on the next steps if you wish to become a member.

Do you have any health issues that will affect your participation in the activities in the shed?

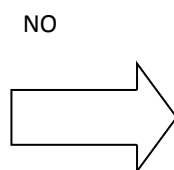
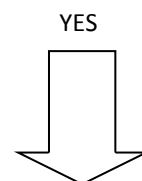


Please tell us about this. To be able to participate in shed activities you need to be able to work with the tools, equipment and materials in the workshop with minimal supervision. You need good eyesight, manual dexterity and an awareness of the physical space around you. You also need to be able to identify hazards and safeguard against them, and be able to communicate with others about this. This helps everyone participate in the shed activities safely.

We are a very small project and we are all volunteers so it's not possible for us to support everyone to take part in the shed who wants to. We would like to be able to do this in the future though and we understand that many people in our community would benefit from being part of the shed, and the shed would benefit from the wide range of skills, experience, support and participation of our community.

We need to do it this way at the moment because the volunteers who help run the shed also need time to be able to enjoy working on their own projects.

Now that you have visited the shed and have seen what is on offer, would you like to become a member of the shed?



Thank you for your interest in the shed. Please tell us if there is something you would like from the shed that we are unable to provide at the moment. We will try to build this into our future plans.

Tell us and we will let you know when a place becomes available.

If we think we are not able to support you to safely participate in the shed we will explain this to you and, if you wish, we can keep your name on file and will get back in touch if we can help in the future.